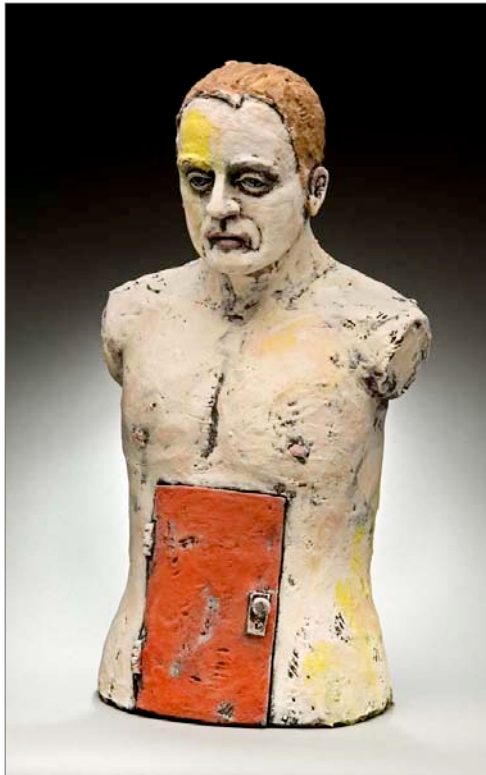


## On The Threshold

A National Juried Exhibition



*Red Door* by David Robinson; ceramic (terra cotta).

Attleboro Arts Museum  
86 Park Street  
Attleboro, MA 02703

**Exhibition dates:**

July 14th – August 10th, 2012

**Opening Awards Reception:**

Wed, July 18th, 7-9pm.

Free and open to the public.

**Gallery Hours:** Tuesday – Saturday, 10am-4pm

**FOR IMMEDIATE RELEASE**

Attleboro, MA – July 3, 2012

*From July 14th – August 10th, 2012 the Attleboro Arts Museum presents an exhibition of all mediums and concepts that communicate literal or emotional views of being “On the Threshold.”*

Being *on the threshold* can be thought of as experiencing a transition, indecision, or being part of an arrival or departure. We’ve all made our way through times when a change or a rite of passage is in the works – and some of us are more comfortable with the metamorphosis than others. When asked to submit art that responds to a theme of “On the Threshold” over three hundred artists from throughout the United States found touching and distinctive ways to express themselves and their situations. They also captured powerful, realistic views from inside or outside their own door – skillfully portraying interior scenes, front steps, ocean views, etc.

In January 2012 the Attleboro Arts Museum posted a national call-for-artists requesting work in any size, medium or concept that addressed all aspects of being “On the Threshold.” Guest juror Michele L’Heureux, Gallery Director of the Beard and Weil Galleries at Wheaton College and also Curator and Director of the Arts at the Kniznick Gallery at Brandeis University’s Women’s Studies Research Center, carefully reviewed all of the submissions that were sent to the Museum. “Eighty-three pieces were thoughtfully selected to be on display. The exhibition contains intricate block prints, sculptural installations, works in oil and acrylic, fiber art, photography and more” comments Mim Brooks Fawcett, Executive Director of the Attleboro Arts Museum. Fawcett continues, “This theme has surfaced extraordinary artistic statements from a range of national artists.”

The public is invited to attend the Opening Awards Reception for “On the Threshold” on Wednesday, July 18<sup>th</sup> from 7 - 9pm. Six juror’s awards will be presented. There is no charge to attend the opening reception.

The Attleboro Arts Museum gallery hours for “On the Threshold” are Tuesday – Saturday, 10 – 4pm. The exhibition will run from July 14<sup>th</sup> – August 10<sup>th</sup>, 2012. Admission is free; donations are always appreciated.



*Atlas: Coming Home* by Xavier Nuez;  
film photography (archival inkjet print).

**Exhibiting Artists (\* Indicates Award Winner)**

Heather Adels, *Seven Colors* – Providence, RI

Nancy Aleo, *Vision Scroll: Gratitude I-Spirit* – Roslindale, MA

James Baker, *Turmoil* – Scituate, MA

Jillian Barber, *Nativity* – Jamestown, RI

Beryl Brenner, *Shore Road Pathway & Shore Road Sunset* – Brooklyn, NY

Karen Callan, *Despair* – Raynham, MA

Betsy Cameron Fine, *Genteel* – Cumberland, RI

Robert Castagna, *Small Town & Lost in His Own Legend* – Medford, MA

Marie Craig, *Broken Window, Metal Pipe* – Natick, MA

Susan G. Daum, *Demise of the Switching Station* – Attleboro, MA

Jay DelGreco, *Attrition* – Moon Twp., PA

Shawn Demarest, *SE 10th* – Portland, OR

Susan Denniston, *Living in the Layers* – Scituate, MA

Dianne Dolan, *On the Threshold* – Charlestown, MA

Iris Donnelly, *Nuestro Poder/Our Power* – Saunderstown, RI

Chloe Feldman Emison, *Behind the Curtain VII & Behind the Curtain XV* – Lee, NH

Virginia Fitzgerald, *Uterus* – Natick, MA

Lisa G. Bailey, *The Gathering* – Franklin, MA

Ricky Gagnon, *Trailer Trash Cleaning Lady #3* – Riverside, RI

Julie K. Gray, *American Flyers & Self-Portrait Silhouette in Fishnet Pattern* – South Portland, ME  
Kim Gulino, *Space* – Rockport, MA  
Jason Hancock, *Twixt and Twane (Wind Horse) Number Two* – Plainville, MA  
Travis Head, *Soft Eyes & Sea Spread* – Blacksburg, VA  
Paul Hitchen, *Qantas* – Somerset, MA  
\* SooJin Hong, *They Will Take You There* – Pittsburgh, PA  
Eric Hovermale, *Into the Light & The Awakening* – Newport, RI  
Marc A. Jaffe, *Longing* – Barrington, RI  
Caroline Jennings, *Wither Must I Wander* – New York, NY  
Brianna Kalajian, *59th and San Pablo, Oakland CA* – Oakland, CA  
Sand T. Kalloch, *On the Threshold of Space #2* – Malden, MA  
Wesley Kalloch, *Cultures* – Malden, MA  
Joanna L. Kao, *Flight of Stairs & Cell* – Boston, MA  
\* Irina Koukhanova, *Gates* – Moreland Hills, OH  
Paul Krewko, *Outside Inn* – Pawtucket, RI  
Debby Krim, *Entrada* – Middleton, MA  
Molly Kugler Dickinson, *The Privy* – Middletown, RI  
B. Glee Lucas, *Spheres of Influence: View From My Studio* – Boston, MA  
Bob Madden, *Wanderings* – Poughquag, NY  
Karen Madden, *Moonlit Mountains* – Poughquag, NY  
Nat Martin, *Dollhouse* – Sudbury, MA  
Krzysztof Mathews, *Area Six & Gift: The Tale of N-Gus* – Warwick, RI  
Madolin Maxey, *Rock Garden at Cherry Trees* – Providence, RI  
Elizabeth Michelman, *Threshold* – Brookline, MA  
\* Andrea Morganstern, *Landing* – Bridgewater, CT  
Susan Strong Muir, *Recompensed* – La Mesa, CA  
Lauren Nauman, *Untitled #4 & Untitled #2* – Brookline, MA  
\* Xavier Nuez, *Atlas: Coming Home & Crystal the Forest Fairy: At the Gates of Her Castle* – Chicago, IL  
Melissa Pace, *Threshold to Great Wonder* – Plainville, MA



*Landing* by Andrea Morganstern;  
C-print.

Norman Petersen, *White-Out(side)* – Bristol, RI  
Beverly Rippel, *Threefold #28* – So. Easton, MA  
\* David Robinson, *Red Door & Myomasca* – Atlanta, GA  
Pamela Ruby Russell, *Blue Bay* – Norfolk, MA  
Diane S. Scotti, *Home* – Walpole, MA  
Gregory Sampl, *Kitchen Light IV & Hallway and Door* – New Bedford, MA  
Diane Savino, *The Ties That Bind* – Hatfield, MA  
Ray Scanlon, *Petrochemical Configuration* – Attleboro, MA  
Alexis Serio, *Morning Deep* – Troup, TX  
Hiroko Shikashio, *Inside, Outside* – West Warwick, RI  
Max Shuster, *Extraction 48110 & Extraction 48115* – Nashville, TN  
Rebecca Skinner, *Door to Nothing or Everything* – Franklin, MA  
Stephen Spiller, *I Just Can't Lie Anymore* – Long Island City, NY  
Rebecca Volinsky, *Walk With Me* – New York, NY  
Tom Wagner, *Campidoglio* – Elizabethtown, PA  
Charter Weeks, *Buvette Gonzales & Sheriff At the Door* – Barrington, NH  
Cynthia Whalen Nelson, *Creation Dream* – Narragansett, RI  
Richard Whitten, *"L' Observatoire" (The Observatory)* – Cranston, RI  
David Willison, *Home Invasion* – Tequesta, FL  
Clay Woodruff, *Toroidal Oxbow* – Brooklyn, NY  
\* Michael Yefko, *Under a Knotted Sky: A Tea Party* – Exeter, RI  
Stephanie Zentara, *Embracing the Light* – Marlborough, MA



*Under a Knotted Sky – A Tea Party* by Michael Yefko;  
mixed medium.

---

***On the Threshold Juror: Michele L'Heureux***

Michele L'Heureux is Gallery Director of the Beard and Weil Galleries at Wheaton College and also Curator and Director of the Arts at the Kniznick Gallery at Brandeis University's Women's Studies Research Center. In addition, L'Heureux has served as a guest curator at the Narrows Center for the Arts and the South Shore Art Center, as well as a guest critic at Massachusetts College of Art & Design and the University of Massachusetts Dartmouth.

In addition to curating and guest teaching, L'Heureux is also a practicing painter who has exhibited her work regionally. Her work can be viewed at [michelelheureux.com](http://michelelheureux.com). L'Heureux holds an M.A. in Aesthetics from Temple University and an M.F.A. in Painting from the University of Massachusetts Dartmouth.

**About the Attleboro Arts Museum**

The Attleboro Arts Museum involves audiences of all ages and backgrounds in the visual arts through diverse educational programs and engaging arts experiences. We work to support the creative and artistic development of both promising and professional artists. The Museum is a privately supported, non-profit arts institution whose core commitment to *Arts for Everyone* guides the Museum's programs and operations.

[www.attleboroartsmuseum.org](http://www.attleboroartsmuseum.org)

**Contact:**

**Mim Brooks Fawcett**

**Executive Director**

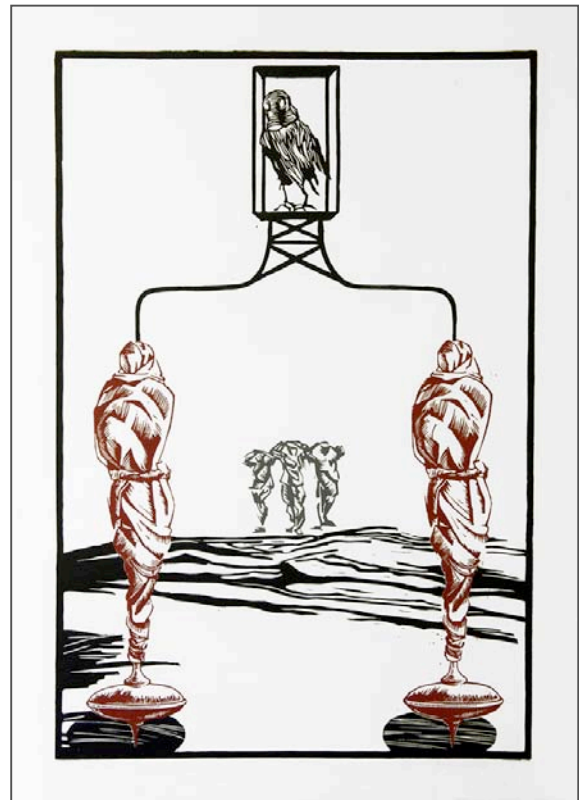
**Attleboro Arts Museum**

**86 Park Street, Attleboro, MA 02703**

**508.222.2644 x11**

**[mfawcett@attleboroartsmuseum.org](mailto:mfawcett@attleboroartsmuseum.org)**

[www.attleboroartsmuseum.org](http://www.attleboroartsmuseum.org)



*Gates* by Irina Koukhanova; hand-pulled block print on hosho paper.



*They Will Take You There* by SooJin Hong; laser etching on wood and printed wallpaper.