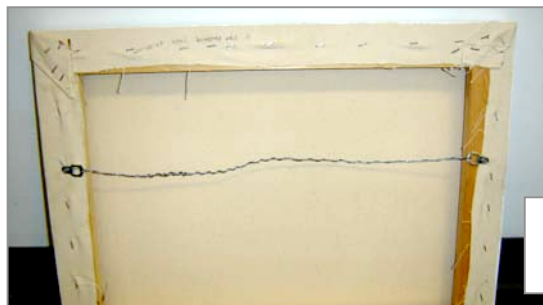


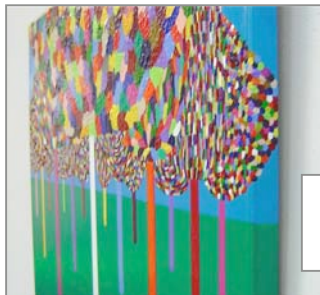
Framing Guidelines

- All artwork should be presented in a simple, professional manner
- The finished presentation – *front, back, top, bottom and sides* – is part of the whole work. It should appear to be new and well crafted, without scratches. All work should be sturdy, not flimsy or fragile.
- All work must be presented as ready-to-hang upon delivery, preferably with a wire attached to the back of the frame between one-third and one-quarter of the way down the piece. Stainless steel braided picture wire works best for smooth hanging and deters rusting.*



Sample wire hanging system

- Do not use *sawtooth* hangers. They are not strong enough to support the weight of most frames safely.
- Some grand masterpieces are well suited for hand-carved gold frames; however most pieces look best in modest frame moldings with clean lines and black, neutral, or natural wood finishes
- Photographs and all two-dimensional work on paper should be matted with neutral tones (white, gray or black only) and covered with clean, scratch-free glass or Plexiglas
- Float-mounting the artwork over the mat, so that the edges are seen, is an option when an artwork has a deckle edge or is constructed with handmade paper. A spacer within the frame should be used to keep the art from touching the glass or Plexiglas.
- When framing a stretched canvas no glass or Plexiglas is required – as the canvas needs to breathe.
- Large oils or acrylics on heavy-duty stretchers with a gallery wrap do not need to be framed. The canvas should be stapled on the **back** and the edge should be painted.



Sample gallery wrap options

- Instructions for special installations should be attached to all 3D pieces.
- Work cannot weigh more than 125 lbs.
- Sculpture must be displayed on pedestals provided by the exhibiting artist
- Quilts and other fiber work should include a sleeve or other place for your hardware – and be ready to hang.

* For the Museum's Community Gallery:

- **All 2- D pieces must have a wire hanging system that is compatible with the Community Gallery rail hanging system provided.**

These guidelines are designed to yield simple, successful presentation solutions that spotlight your art. Please know that costly frames and hanging systems are not suggested or required.